

Product Brief

Symantec Directory

Key Benefits

- **TCO.** Achieve 84% higher performance and greater reliability with fewer resources.
- **Scalability** and performance. Meet the deployment demands of dynamic applications and scale to any number of users.
- **Manageability.** Improve efficiency by consolidating data islands into a geo-distributed backbone.
- **User experience.** Provide a highly responsive and always available application experience for your users.

Key Features

- **Exceptional read and write performance.** Lowers TCO by performing operations at rates of up to 20,000 searches or updates per second on entry-level hardware.
- **All master replication.** Improves performance and data integrity with write-through replication, which eliminates the need for master-and-consumer models.
- **Automatic recovery.** Increases reliability and availability through seamless failover and failback with automatic data resynchronization.
- **High scalability.** Scales to hundreds of millions of users and devices, and billions of entries, by distributing data across any number of servers, to support all channels.
- **Data distribution and partitioning.** Supports geographically dispersed data centers, and seamless application access to data, while helping you to address compliance regulations, such as the GDPR.

Overview

Symantec Directory is a battle-tested, next-generation directory server with superior scalability, reliability, and performance. According to the ICSynergy article, *Directory Benchmark Comparison* (November 29, 2017), Symantec Directory is 84% higher overall than the competition. The solution enables you to support the most demanding on-premises and cloud applications at scale and across data centers, with minimal infrastructure and personnel resources for a lower TCO. Symantec Directory sets the benchmark for business-critical online services by providing data distribution, intelligent internal routing, advanced replication, automated disaster recovery, and a REST-based API and web-based management UI.

Business Challenges

Organizations are becoming increasingly reliant on their online and mobile applications to provide critical services for customers, employees, and business partners. The ability to deliver superior availability, reliability, scalability, and performance for these applications depends on the underlying directory infrastructure. Many organizations face the following challenges:

- **Explosive growth.** The explosion of user and device identities, and the ability to maintain the performance necessary for a superior user experience, is challenging many legacy repositories.
- **Identity silos.** Multiple directories that are deployed by different business units over time cause issues including, but not limited to, poor user experience, security exposure, and increased operational costs.
- **New requirements.** Security requirements are evolving from simple user authentication to tracking detailed login and personalized information associated with dynamic business operations. In addition, compliance with regulations, such as the GDPR, requires control over the storage and access to personally identifiable information (PII) data.

Solutions Overview

Symantec Directory is a proven next-generation directory server that provides a standards-based distribution model (X.500 server-to-server communication), a standards-based replication model (DISP), and an overall higher performance than the competition. You gain the necessary scalability and reliability to support the most demanding on-premises and cloud applications at scale and across data centers, with minimal infrastructure and personnel resources for a lower TCO.

The solution's superior technology enables ultra-high-speed performance for both read and write operations, as well as transparent distribution and replication to scale to any number of servers.

Unlike common LDAP servers that cannot efficiently communicate with one another, Symantec Directory is architected to perform and scale in a distributed environment at significantly lower hardware costs.

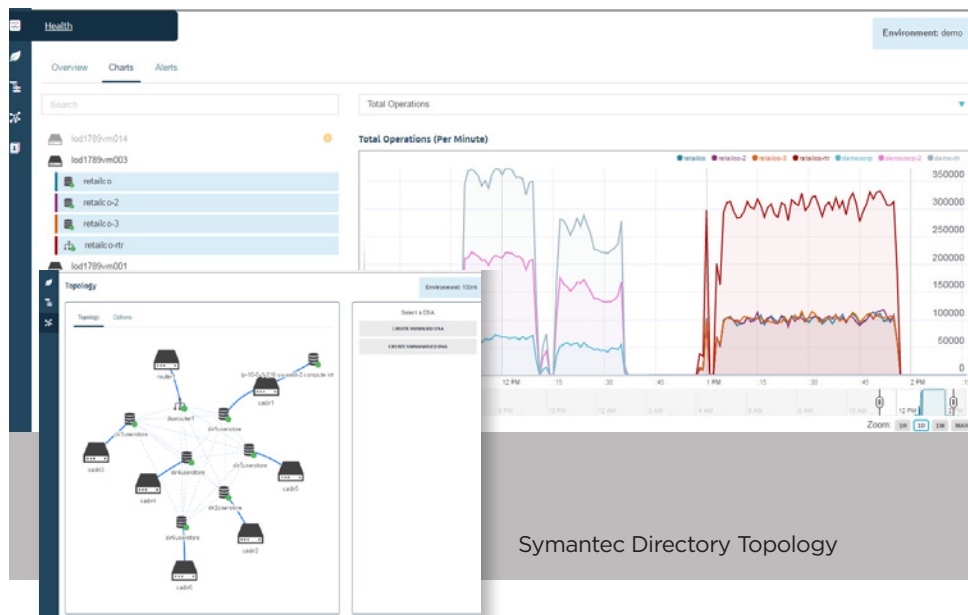
In addition, Symantec Directory has an intuitive user interface for configuring and operating your infrastructure. The solution also has REST-based management APIs for automated deployment and monitoring of distributed Symantec Directory instances, and a SCIM 2.0-compliant REST API for managing users and groups.

Critical Differentiators

Symantec Directory serves as the backbone for delivering unlimited scalability, superior performance, and maximum availability for the most demanding online applications, without significant growth in administrative or infrastructure costs.

- **Dynamic operations.** Exceptional write and read performance allows the solution to support the more demanding dynamic operations of today's online and mobile applications.
- **Fast application responsiveness.** Leverages X.500 protocols to provide internal high-speed switching and routing capabilities.
- **Data accuracy.** Write-through replication supports near-instantaneous updates (measured in milliseconds) across all distributed servers to ensure that all copies of data are in sync.

Symantec Directory Monitoring



- **High availability.** Supports real-time replication and automatic and transparent failover and recovery.
 - **Scalability.** Distributes data across any number of servers, supporting millions of users and devices without incurring large hardware costs or performance degradation.
 - **Usability.** Provides REST-based APIs for automated deployment and monitoring of Symantec Directory instances.
 - **ODSEE migration.** Supports migration from Oracle Directory Server Enterprise Edition (ODSEE) with bidirectional synchronization between ODSEE and Symantec Directory.
 - **Simplifies integrations.** SCIM 2.0-compliant REST API simplifies user and group lifecycle integrations into identity management applications.
- ## Related Products
- **Symantec SiteMinder.** Enable Web single sign-on for on-premises, hosted, or partner-based applications for your customers and business partners.
 - **Symantec Advanced Authentication.** Identify users with two-factor credentials and risk-based authentication.
 - **Layer7 API Gateway.** Provide a trusted API security solution for integrating across apps, devices, and businesses.



For product information, visit our website at: broadcom.com/symantec-iam.

Copyright © 2020 Broadcom. All Rights Reserved. The term "Broadcom" refers to Broadcom Inc. and/or its subsidiaries. Broadcom, the pulse logo, Connecting everything, Symantec Directory, Symantec SiteMinder, Symantec Advanced Authentication, Layer7 API Gateway, and the Symantec logo are among the trademarks of Broadcom.

Symantec-200-360099-0130 January 2020