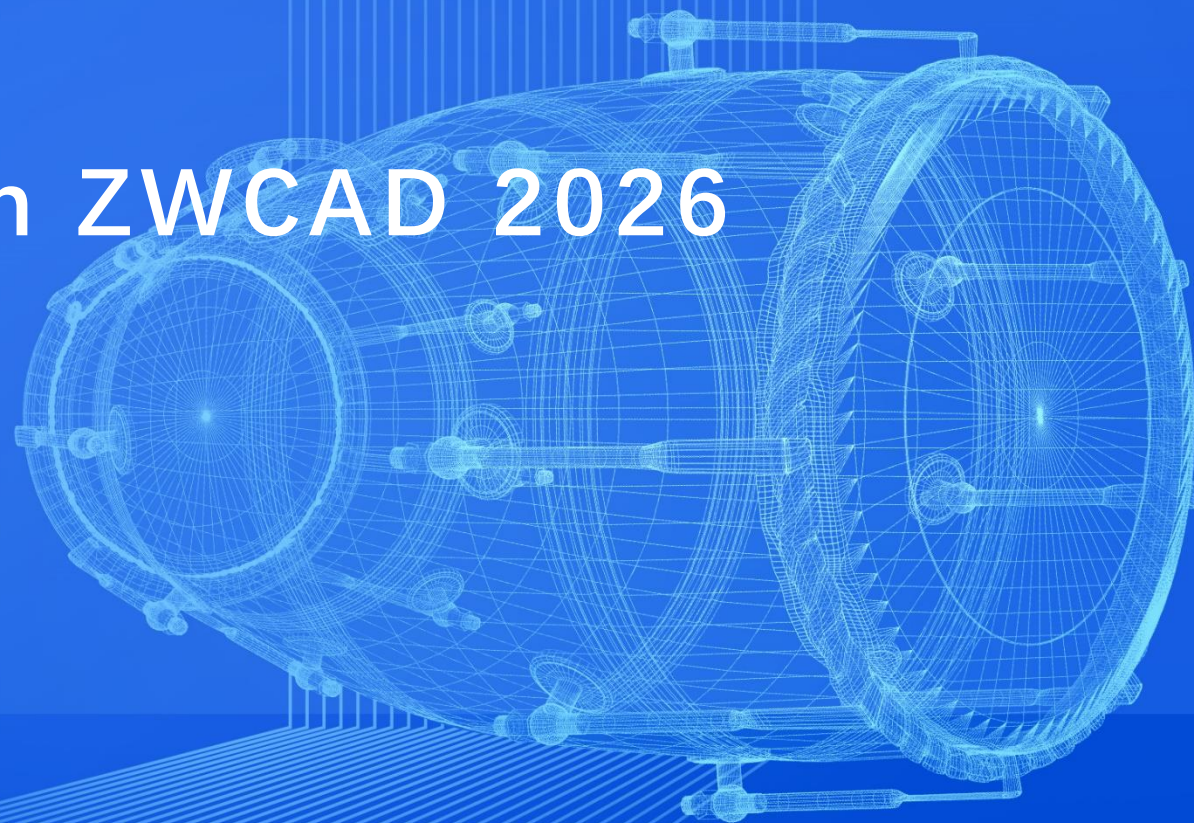


ZWsoft

What's New in ZWCAD 2026



Highlight Features You Must Know



Simplify operations to make designs more efficient

Highlight Features You Must Know

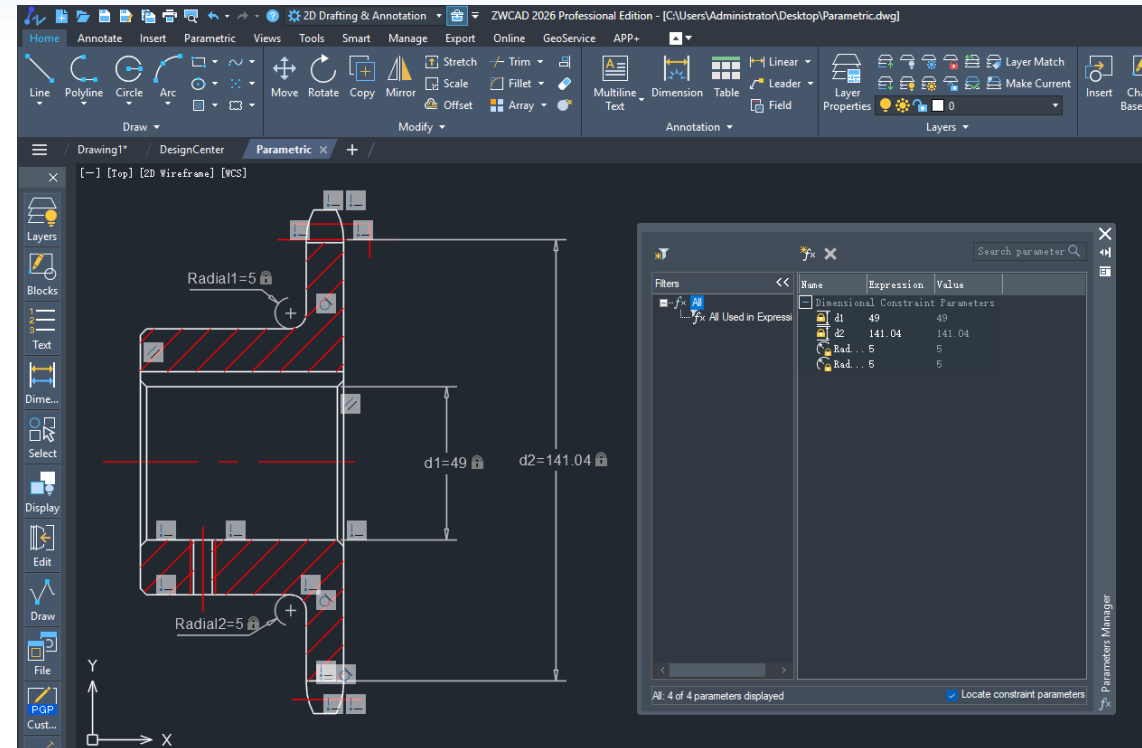
Parameterization: A brand new design experience

Feature Highlights

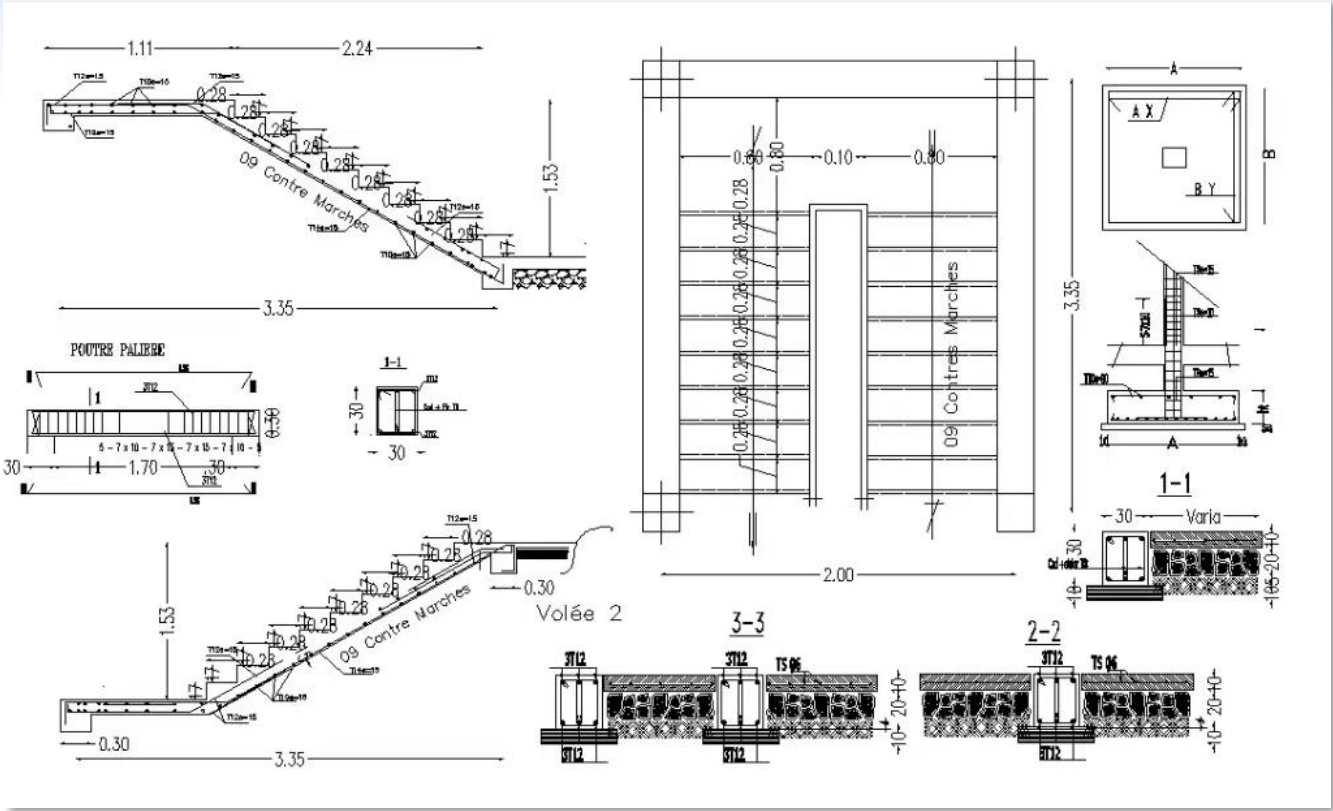
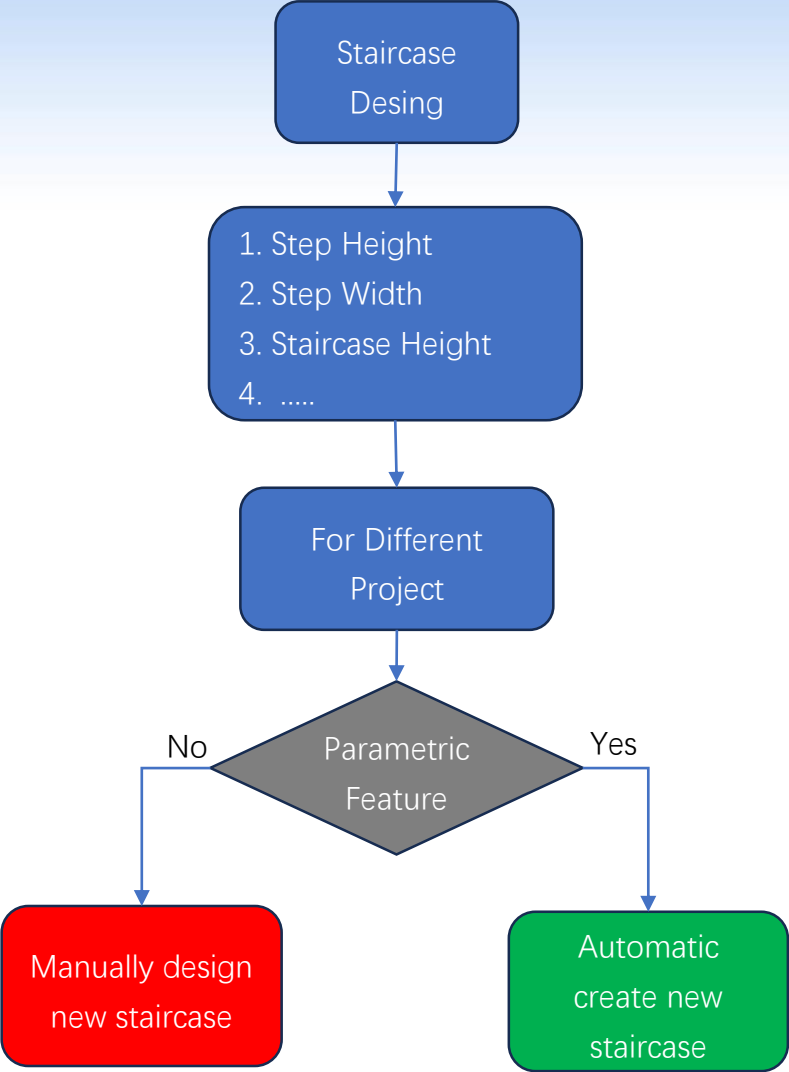
- Support geometric constraints, dimensional constraints
- Support parameter manager
- Support create Flexiblocks with parameters
- Support automatic geometric constraints and inferred geometric constraints

Comparison of competing products

Features \ Products	ZWCAD	ACAD	GCAD
Geometric Constratin	✓	✓	✓
Dimensional Constratin	✓	✓	✗
Parameter Manager	✓	✓	✗
Dynamic block with parameter	✓	✓	✗
Auto Constrain	✓	✓	✗
Infers Constrain	✓	✓	✗



User Story

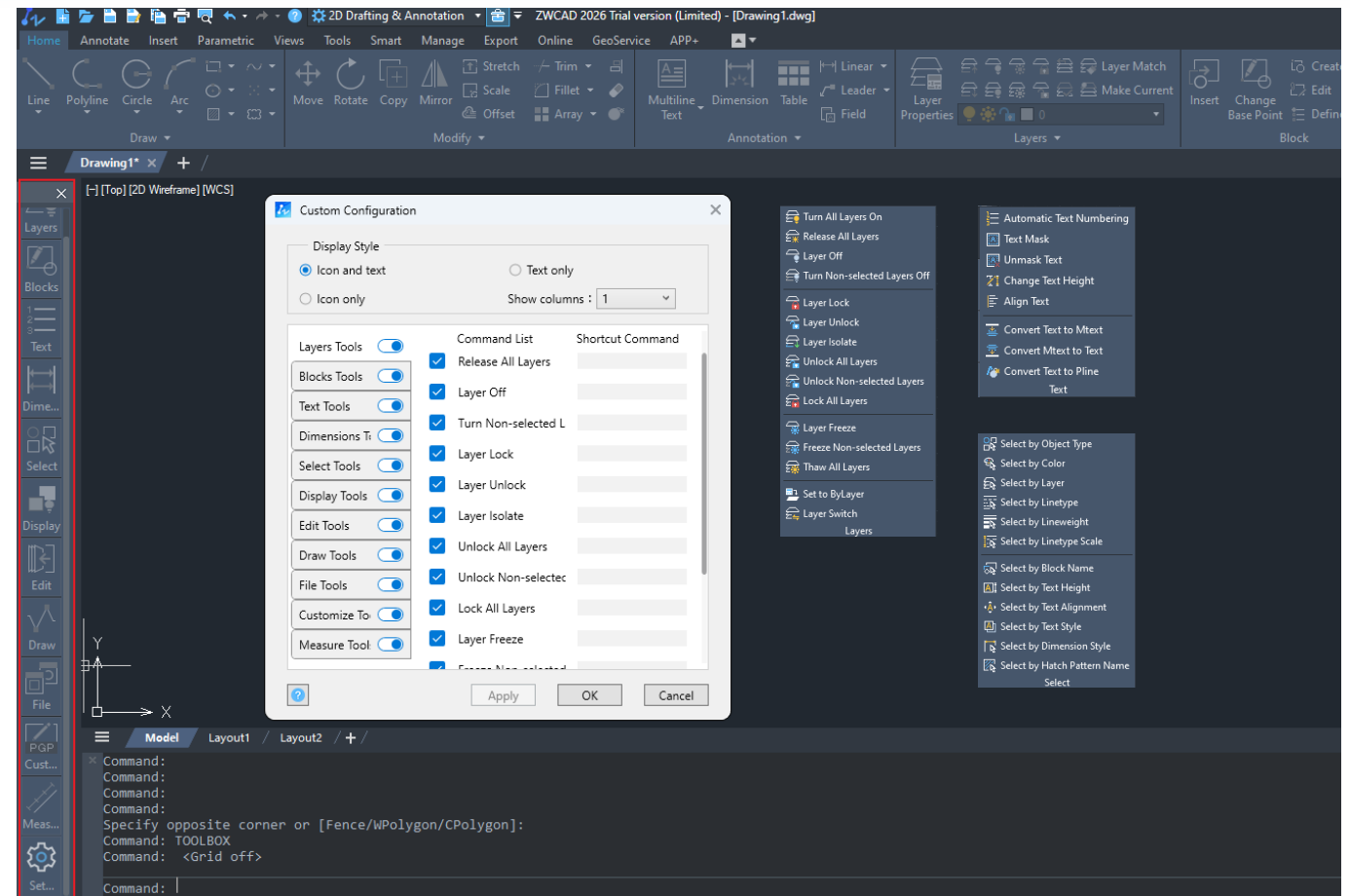


Highlight Features You Must Know

ZWCAD Toolbox: Practical Official 'Plugin'

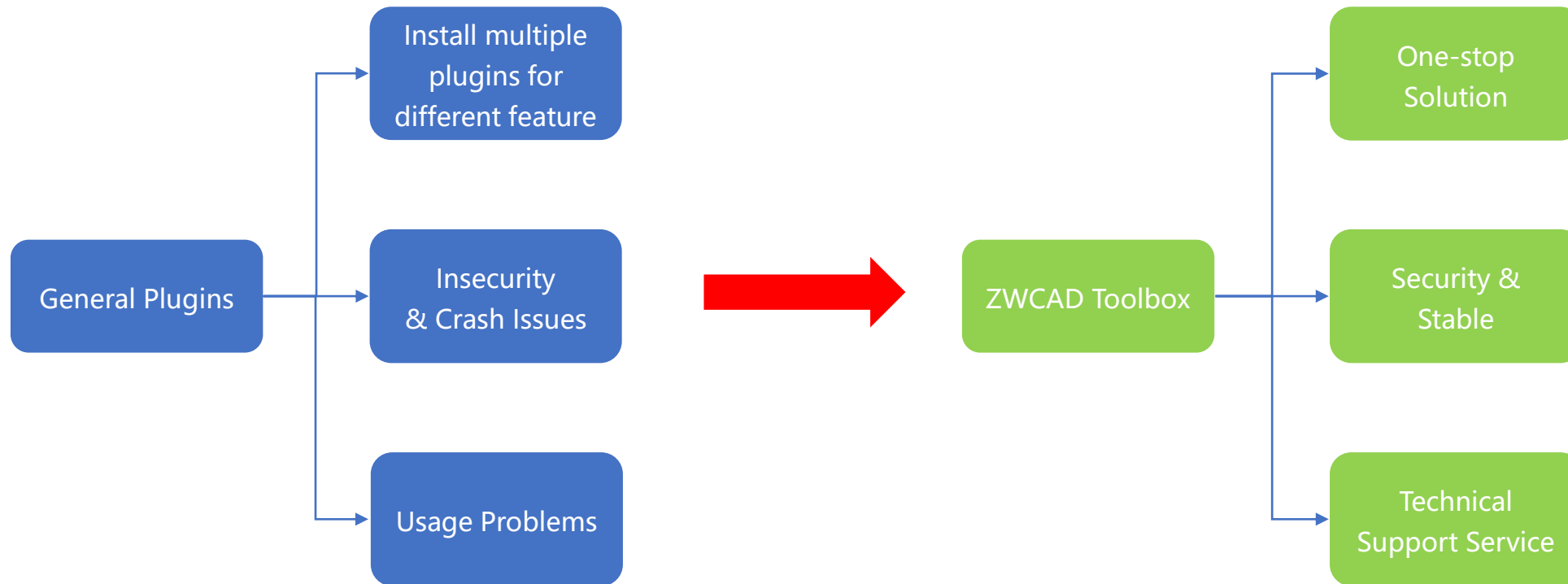
Feature Highlights

- ZWCAD Toolbox contains a wealth of plug-ins for different scenarios (Draw, Select, Block, Text, Layer)
- Support customize toolbox panel
- Support customize panel status (ribbon or menu)



User Story

The difference between using external plugins and ZWCAD Toolbox



Highlight Features You Must Know

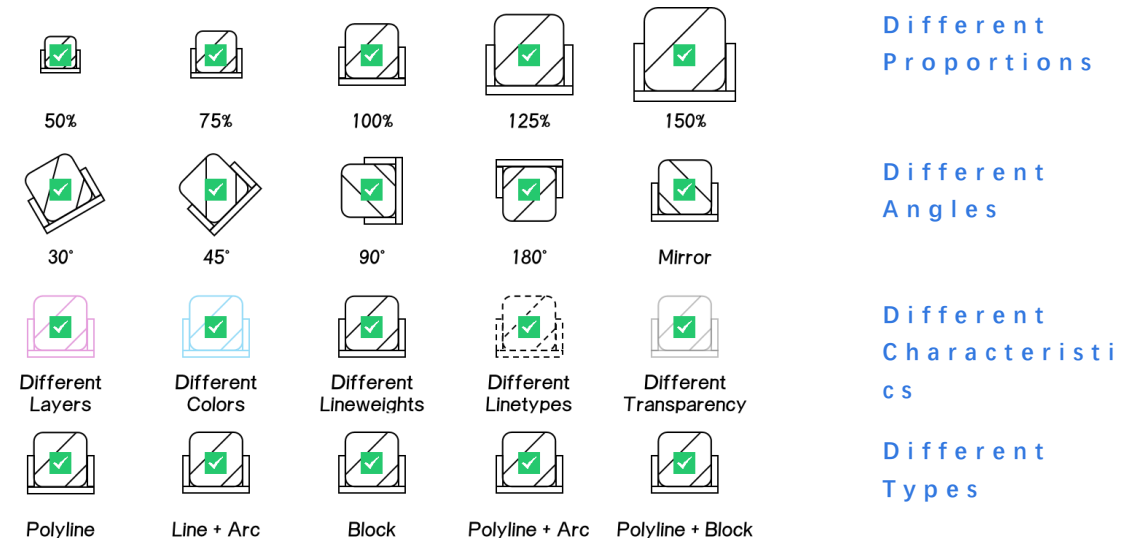
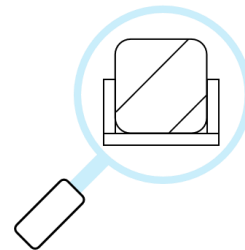
Smart Match: An efficient batch operation assistant with AI technology

Feature Highlights

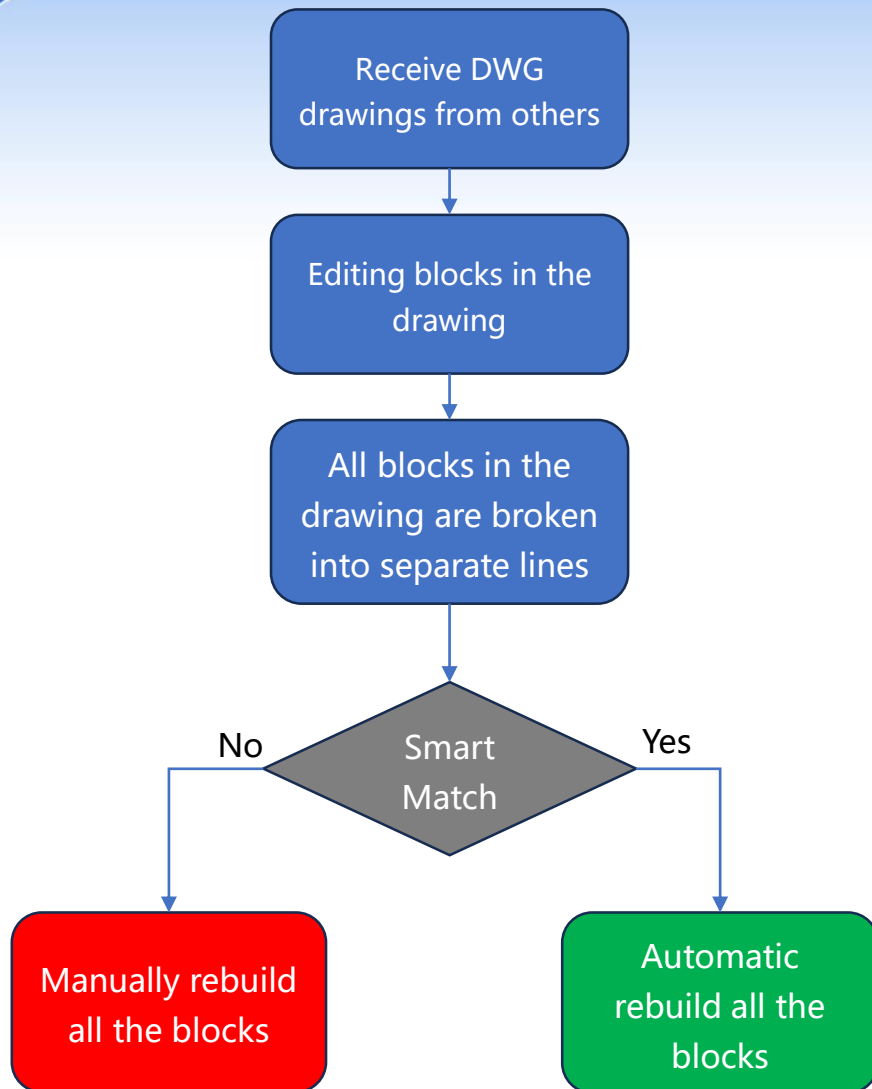
- Quickly locate and select similar non-block objects in the drawings
- (include different proportions, angles, characteristics, types)
- Convert selected objects into blocks in batch.
- Replace selected objects into other blocks in batch.
- Automatically calculate blocks quantities and create table
- Related APIs are provided

Comparison of competing products

Products	ZWCAD	ACAD	GCAD	BCAD
Smart Matching (different type of objects)	✓	✗	✗	✓
Smart Matching (different type of proportions)	✓	✓	✗	✗
Smart Matching (different type of characteristics)	✓	✓	✗	✓
Batch create blocks	✓	✓	✗	✓
Batch replace blocks	✓	✓	✗	✓
Automatically create table base on block quantities	✓	✓	✗	✗
APIs available	✓	✗	✗	✗



User Story

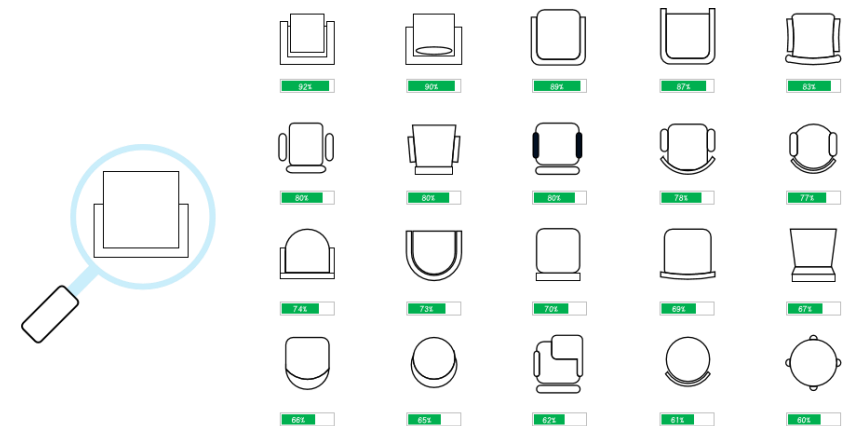
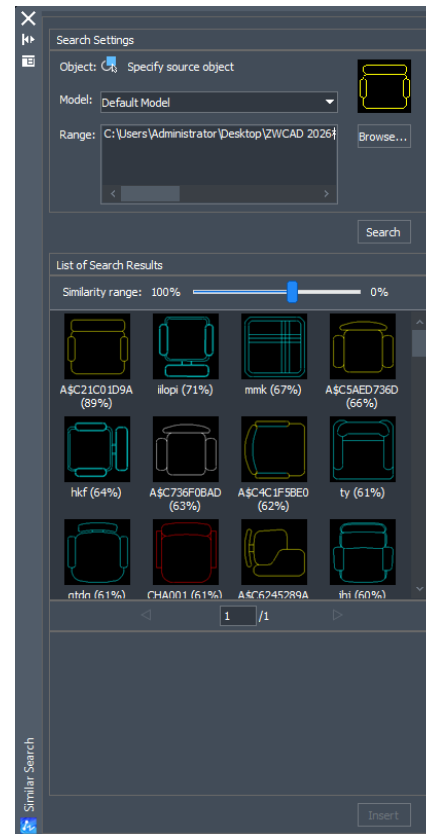


Highlight Features You Must Know

Similar Search: Helps you quickly find similar objects with AI technology

Feature Highlights

- Find blocks base on graphic similarity
- Find blocks base on graphic similarity (non block as source object)
- Replace selected objects into other blocks in batch.
- Support search range setting
- Support adjusting the number of search results
- Support preview and insertion of search objects (



Users-Requested Feature Delivered

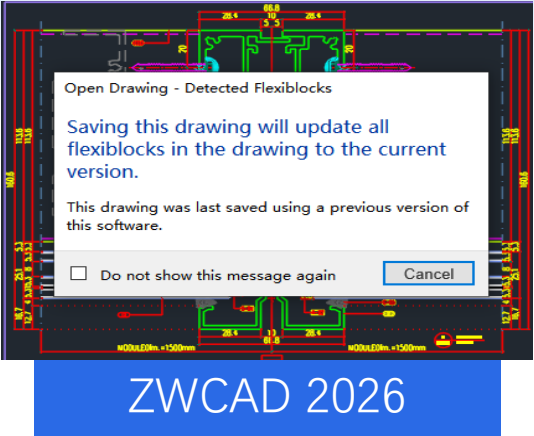
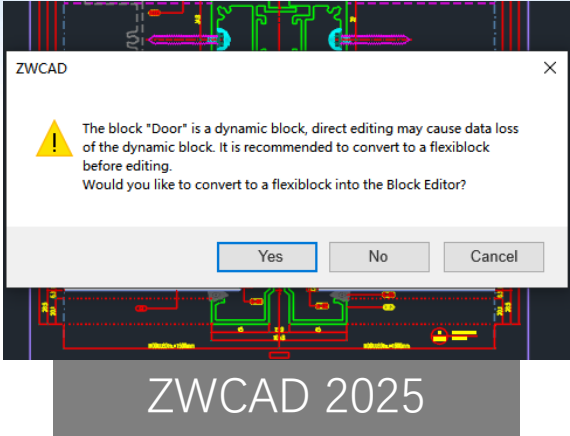
Focus on high demand and meet customers' different design requirements

Users-Requested Feature Delivered

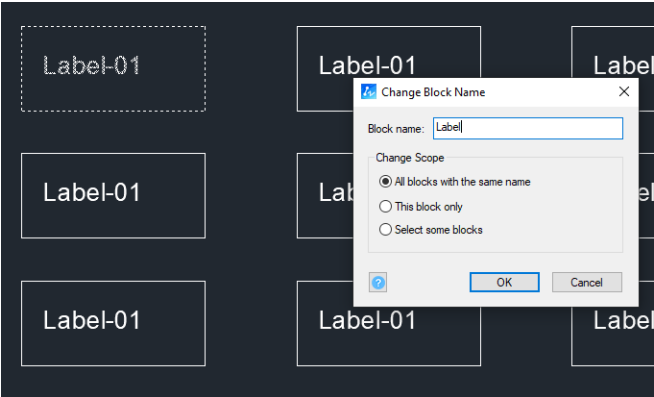
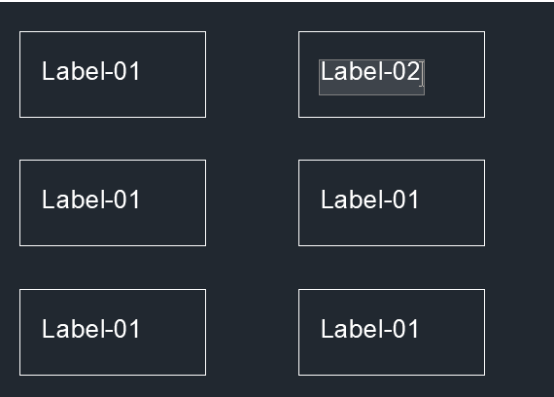
Block Module Optimization

Feature Highlights

- Dynamic block now can be edited in ZWCAD directly
- Flexiblock now can be edited in AutoCAD directly (converter no longer needed)
- Attribute block field information can be modified directly.
- Support to modify individual block's name.
- Support in place editing and saving
- Improve block display and editing accuracy



Products \ Features	ZWCAD	ACAD
Flexiblock/Dynamic block compatibility	✓	✓
Modify individual block name	✓	✗
In place editing and saving	✓	✗
Quick attribute block editing	✓	✓

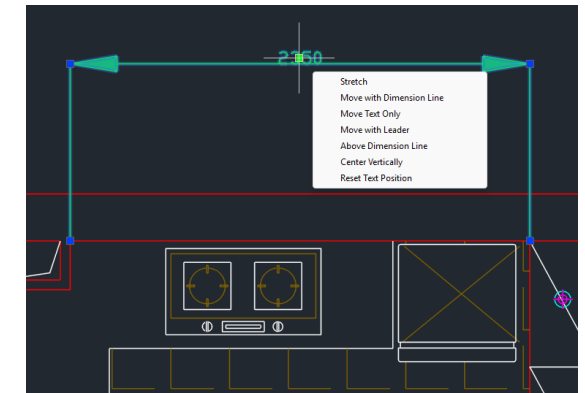
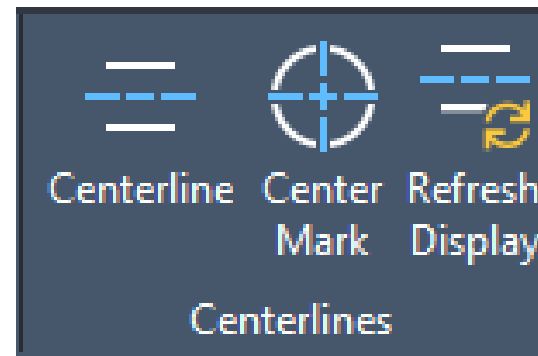
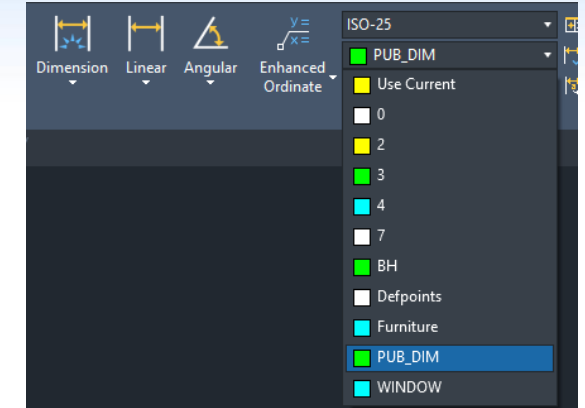
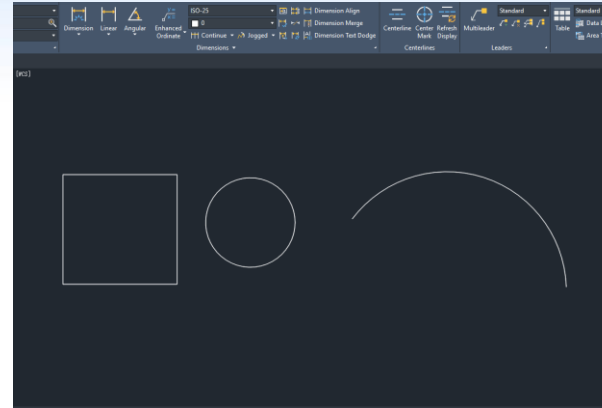


Users-Requested Feature Delivered

Dimension Module Optimization

Feature Highlights

- The "Dimension" command can automatically recognize different object types and activate corresponding dimensioning functions.
- Support for setting specific layer to place dimension.
- Added functionality for drawing centerlines and center marks.
- Added dimension grip menu
- Added right-click shortcut to switch dimension styles.



Users-Requested Feature Delivered

Plot Module Optimization

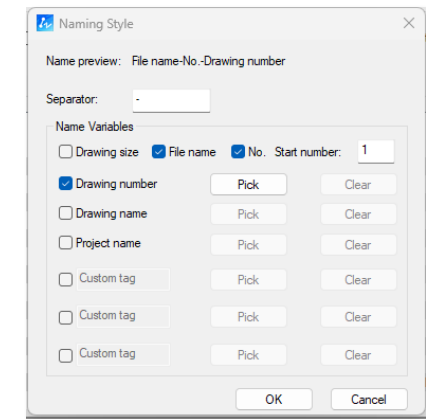
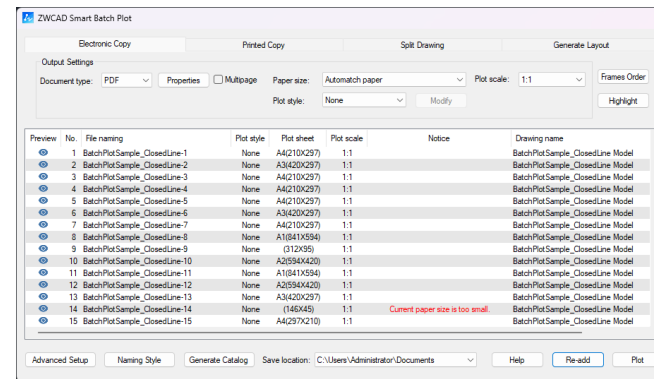
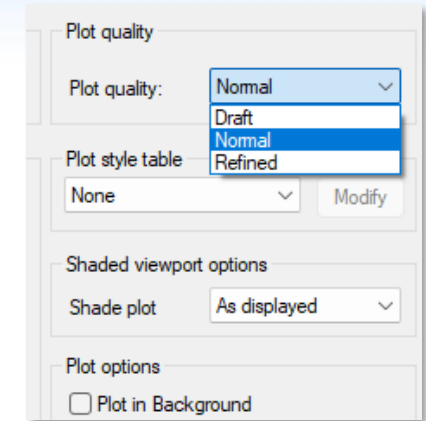
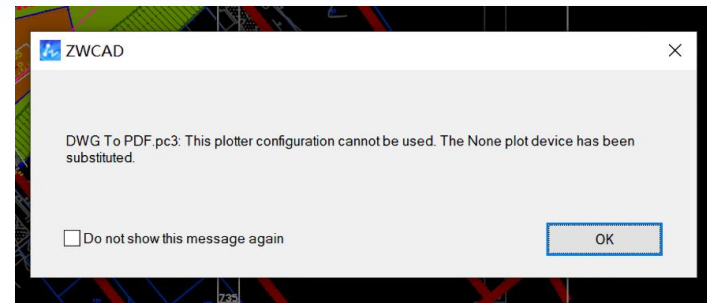
Feature Highlights

- General Plot Improvements:**

- a) Support for reading *.pc3 and *.pmp file directly
- b) Add a "Plot Quality" option
- c) Compress plotting PDF/DWF file size

- Smart Plot Improvements:**

- a) Support automatic paper size matching based on the drawing layout.(include special paper size like A2+1/4, A0+1/2)
- b) Optimized custom file name feature, support naming each printed drawing according to predefined rules.

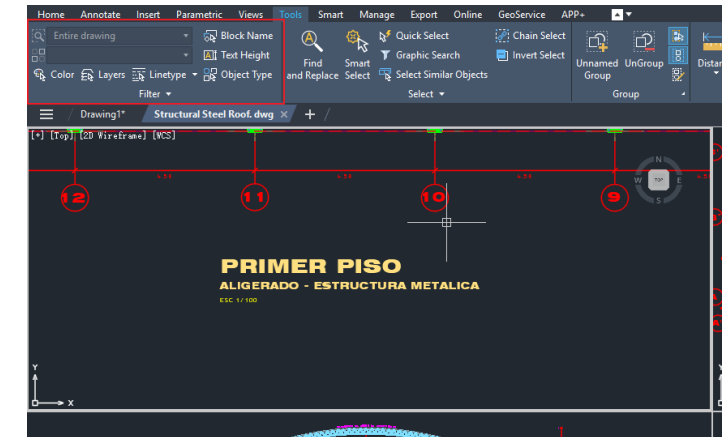


Users-Requested Feature Delivered

Interaction Optimization

Feature Highlights

- The "Find and Replace" panel has been optimized, allowing users to directly edit the search content without needing to close the panel and perform operations separately.
- Added "Ctrl+F9" short key to call out the "Find and Replace" panel.
- Added a powerful object picker that allows users to quickly select objects by setting different conditions.
- Added "Chain Selection" feature, enabling quick batch selection of connected individual lines.



Basic functions Consolidated

The background of the slide features a solid blue color with several large, overlapping, wavy lines in a lighter shade of blue, creating a dynamic, fluid effect.

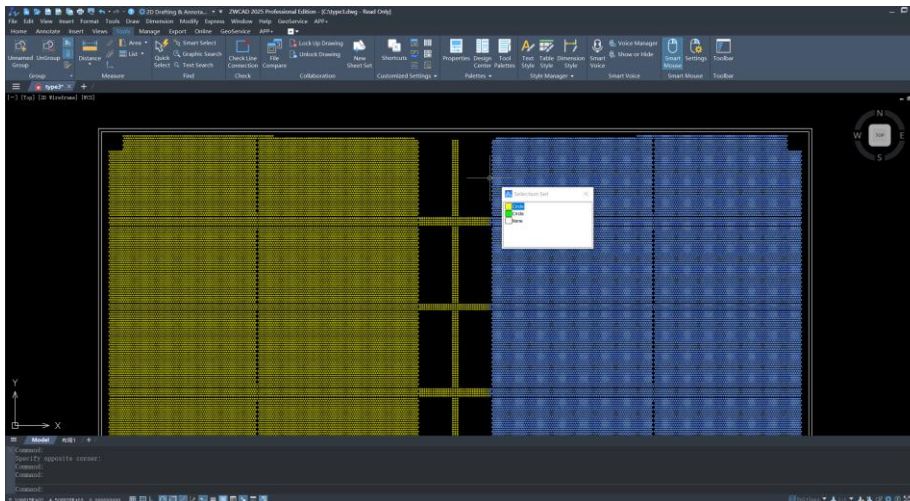
Detail repair makes design easy

Basic functions Consolidated

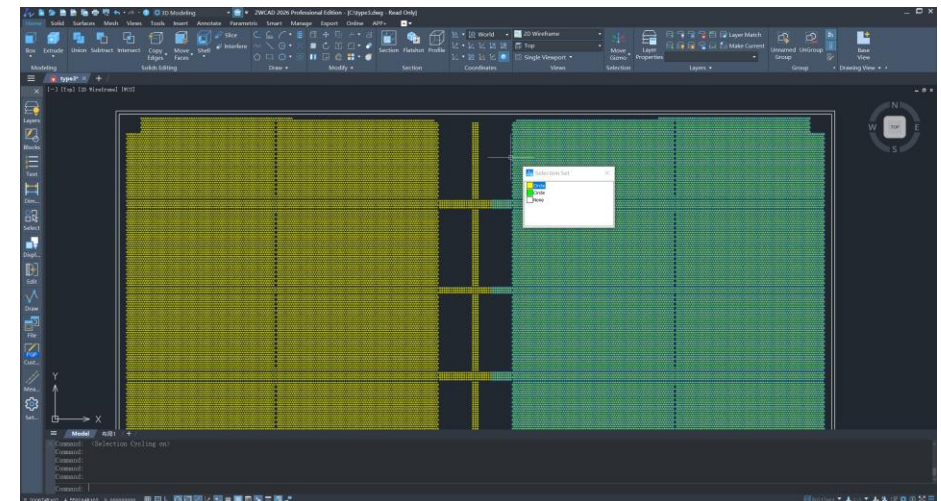
Display Optimization

Feature Highlights

- Added support for highlighting the bottom graphic of overlapping objects.
- Optimized the selection/hover highlighting effect.
- Improved image display accuracy when hardware acceleration is enabled for integrated graphics cards and some dedicated graphics cards.



ZWCAD 2025



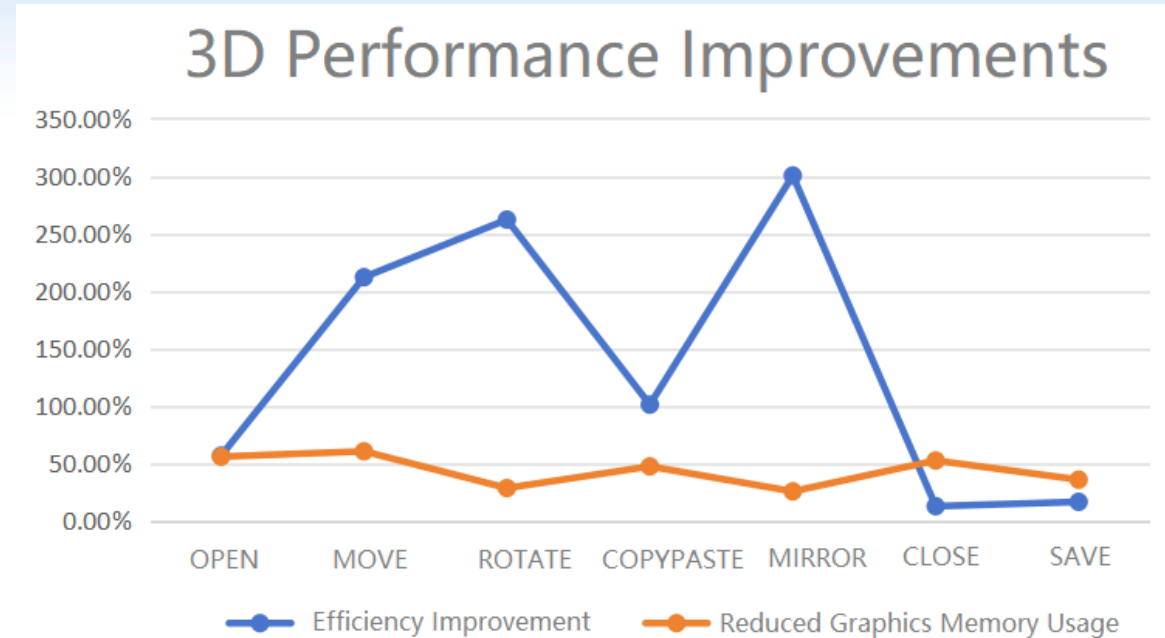
ZWCAD 2026

Basic functions Consolidated

3D Performance Improvements

Feature Highlights

- Drawing opening efficiency improved by 50%
- General editing operation efficiency improved by 90%
- Drawing closing efficiency improved by 10%
- Memory usage during drawing opening reduced by 25%,
- Average Video RAM usage during general operations reduced by 30%.



Test instructions:

Drawing: 100 3D drawings with more than 100w triangular facets

Testing machine:

CPU: i7-13700K;

GPU NVIDIA RTX 3060;

32g of memory;

System:

Windows 10 Professional Edition

ZWCAD 2026 Product Features

More improvements waiting for you to experience!


Functional improvement	Improvement description
Layer operation supports first selection	Several functions related to batch changing layer properties support pre selection, improving interaction friendliness.
GIS Module Improvement	Realize read compatibility of 900+coordinate systems saved by other CAD software.
Command line interaction optimized	Support direct clicking on branch keywords for subsequent operations during command-line interaction, without the need to type letters, improving operational efficiency.
ZWCAD vectorization tool Improvement	In addition to standalone license, ZWCAD vectorization tool has added network license mode, providing more options for authorization methods.

Summary of ZWCAD 2026

Key Values

ZWCAD2026 Product Features

Highlight Features You Must Know

- 
- 01. Parameterization**
Support creating, editing geometry and dimension constrains.
 - 02. ZWCAD Tool Box**
Provides a wide range of extended tools to enhance drawing efficiency.
 - 03. Smart Match/Similar Search**
Leverages AI technology to automate batch operations within drawings

Users-Requested Feature Delivered

- 04. Block Module Improvement**
Compatible with dynamic blocks, Supports direct editing of attribute block information and block name modification.
- 05. Dimension Module Improvement**
Smarter dimension, dimension layer, grip menus for dimensions, centerline/center mark creation functionality
- 06. Plot Module Improvement**
PC3 file compatibility, reduced output file sizes, smart plot now includes automatic paper size matching and custom file naming

Basic Functions Consolidated

- 08. Display Optimization/3D performance**
Strengthened basic capabilities by optimizing object display effects and improving 3D drawing operation efficiency.

Thank you!
